



DT Pro Quick Start Guide: MPIII Systems



Mesa Labs, Inc.
www.mesalabs.com

Table of Contents

• Introduction.....	pg 3
• System Test.....	pg 4
• Programming Loggers.....	pg 5
• Reading Loggers.....	pg 8
• Standard Read.....	pg 8
• Batch Read Mode.....	pg 8
• Read Views and Detail.....	pg 9
• Creating Reports.....	pg 10
• Exporting Data.....	pg 11

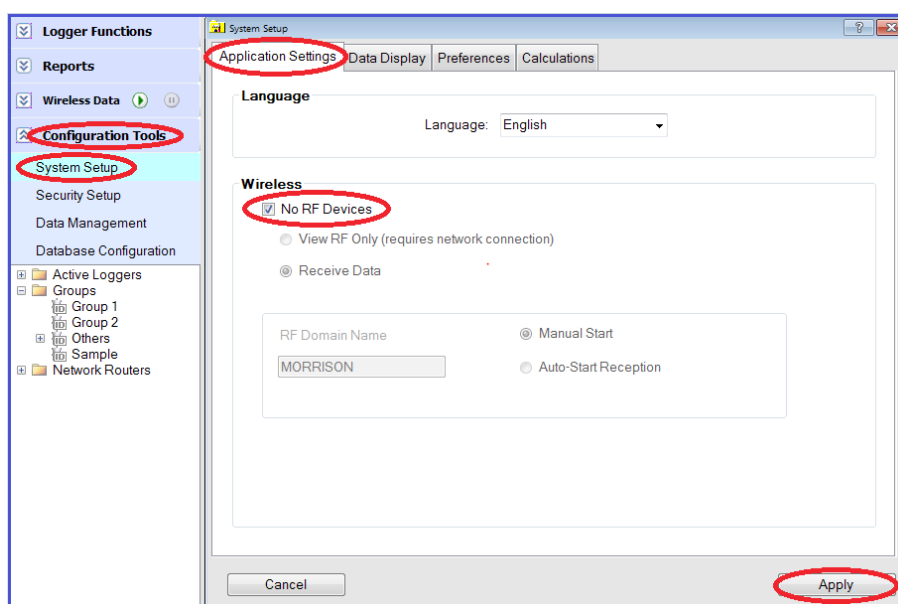
Introduction

This is a basic user guide. For more thorough detail, press the F1 key in any screen of DT Pro to access the applicable detailed Help Topic!

Before you begin, power up your PC and ensure that the DataTrace reader Interface is connected via USB. Start the DataTrace Pro Software. If you need assistance downloading the software, please visit our website: <http://DataTrace.MesaLabs.com/DataTrace-Pro-Software/>

If you will be using MPIII loggers only (without the use of MPRF Radio Frequency loggers), it is advisable to configure your system to be optimized for MPIII use. You must have appropriate user permissions to make these changes.

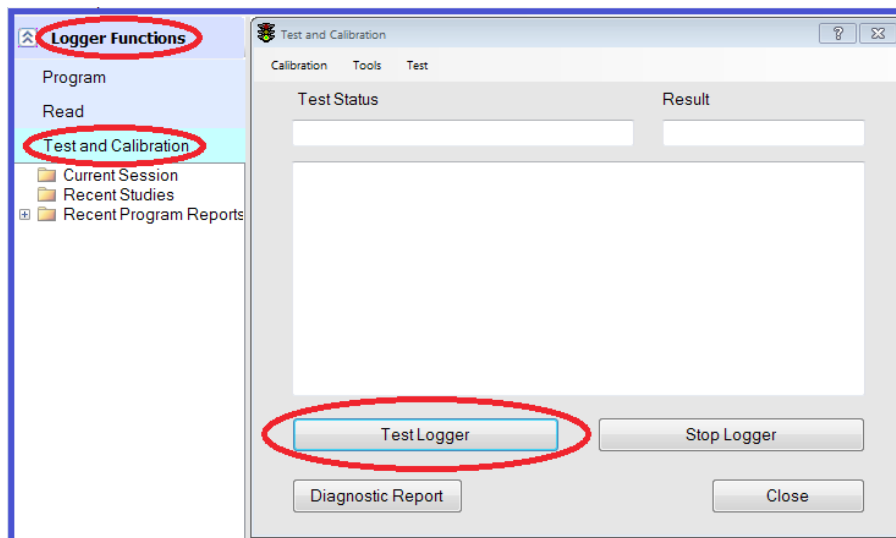
- Select System Setup under the Configuration Tools tab.
- Under the Application Settings tab, select "No RF Devices" and Apply.



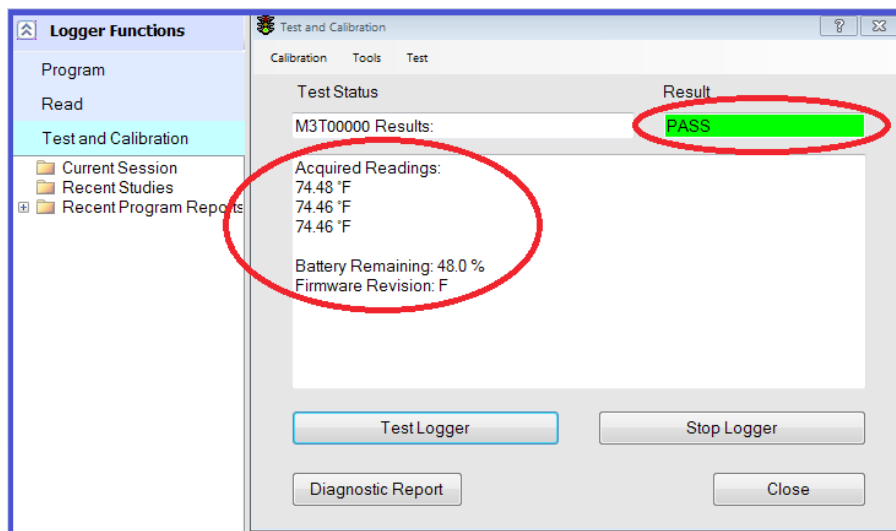
System Test

This feature is used to check the general functionality of the reader interface and loggers (it is not vital for everyday programming or reading).

- Expand Logger Functions and select Test and Calibration.
- Place logger in the interface.
- Click the "Test Logger" button.



- The software will perform a short test of logger functionality.
- Pass/Fail test results will be displayed within 10 seconds.
- If successful, logged data will be shown. Battery status and firmware revision level will also be displayed.
- Check that test results are consistent with environmental conditions.



NOTE: The Test function will not affect Programming or Reading. However, if you have unread data currently residing in a logger's memory, the Test function will override and erase it. Please Read the logger first if unread data is present. Read instructions are on Page 8 of this guide.

Programming Loggers

Expand the Logger Functions bar. Select Program to start the Program Wizard.

- Place logger in interface reader.
- Enter Data Logging Parameters Start Time.
 - This is the date and time you intend for data logging to begin.
 - No "End Time" exists. The loggers will stop logging data when they are Read or when the memory is full.
 - When setting the Start Time be sure to allow enough lead time for programming all sensors before the scheduled time is to start.
- Define Interval: How often would you like the logger to collect data?
- Run ID: This feature allows you to put your loggers in numerical order according to when they were programmed. This field is optional but may be useful for some testing protocols. For example, loggers with Run IDs DT-01 and DT-02 are in Retort Basket 1, DT-03 and DT-04 are in Retort Basket 2, and so on.
- The Memory Full Time Estimator is a convenience calculator only and does not affect the programming in any way.
- Select Next.

NOTE: If your system is configured to accept both MP111 and MPRF loggers (See page 3), your screen view will differ slightly from this guide. Please refer to our MPRF guide for more details.
<https://datatrace.mesalabs.com/wp-content/uploads/sites/19/2016/10/DT-Pro-Quick-Start-Guide-MPRF-Systems.pdf>

- In most applications, the following screen will not require any adjustment. Press the F1 key for in-depth detail.

DT Pro MP111 Systems Quick Start Guide

- Several fields will be populated automatically upon logger programming and do not require user input. All other fields are optional.
- Optional Fields:
 - The Comment field may be defined if desired. This comment will be associated with the programmed logger and be visible in the program and other reports as well as in the Data Table after the logger is read. This identifier can be associated with location ("Top Left Corner," for instance, or "Can Three") or other desired details.
 - Batch Program. Select to program multiple loggers quickly without the need to press the "Program" button after each logger. Select "Stop" when done.
 - Increment Start Time button may appear and can be used to increment the start time by the pre-selected interval, assuring that logged data can be aligned in grid format for reports.

The screenshot shows the 'Program Loggers' window with the following fields and annotations:

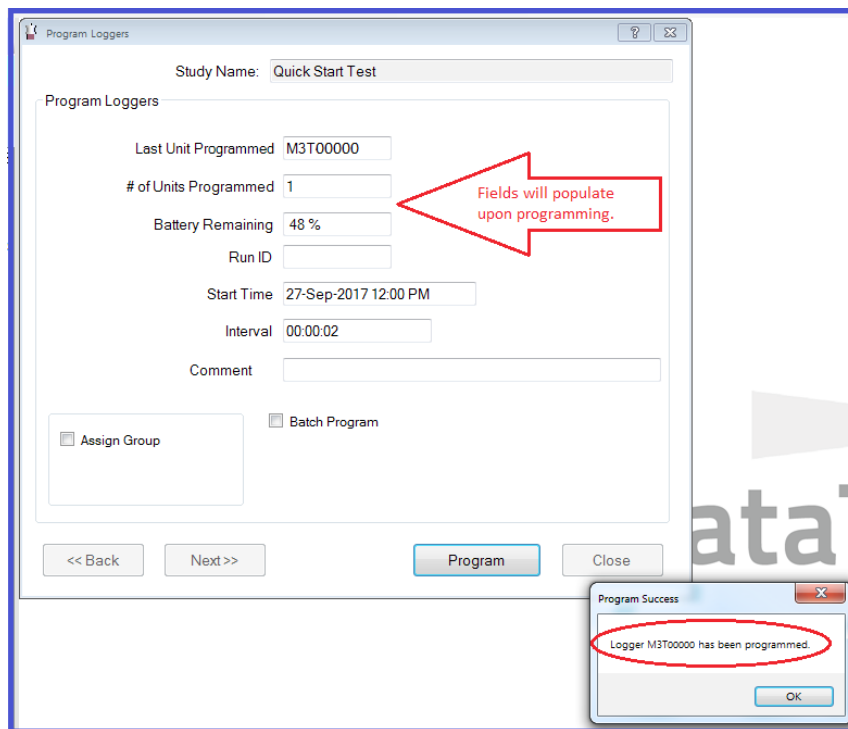
- Study Name:** Quick Start Test
- Program Loggers** section:
 - Last Unit Programmed:** [Empty field] with a red arrow pointing to it.
 - # of Units Programmed:** [Empty field] with a red arrow pointing to it.
 - Battery Remaining:** [Empty field] with a red arrow pointing to it.
 - Run ID:** [Empty field] with a red arrow pointing to it.
 - Start Time:** 27-Sep-2017 12:00 PM with a red arrow pointing to it and the text "Auto-populated".
 - Interval:** 00:00:02 with a red arrow pointing to it and the text "Auto-populated".
 - Comment:** Comment Optional
- Optional Fields:**
 - ☐ Assign Group Optional
 - ☐ Batch Program Optional

A red arrow points to the empty input fields with the text "No input needed."

Buttons at the bottom: << Back, Next >>, Program, Cancel.

DT Pro MP11 Systems Quick Start Guide

- Click the Program button.
- A popup message will indicate successful programming.
- Select Close when all loggers are programmed.



Reading Loggers

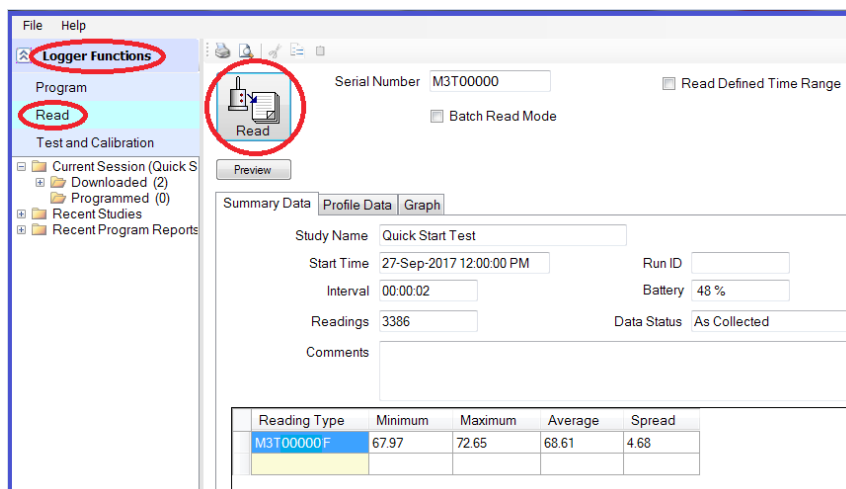
Expand Logger Functions and select Read to start the data download process.

Standard Read

- Place the logger in the interface.
- Click the Read button.
- When download is complete, view the logger data.
- Place the next logger in the interface and click Read.

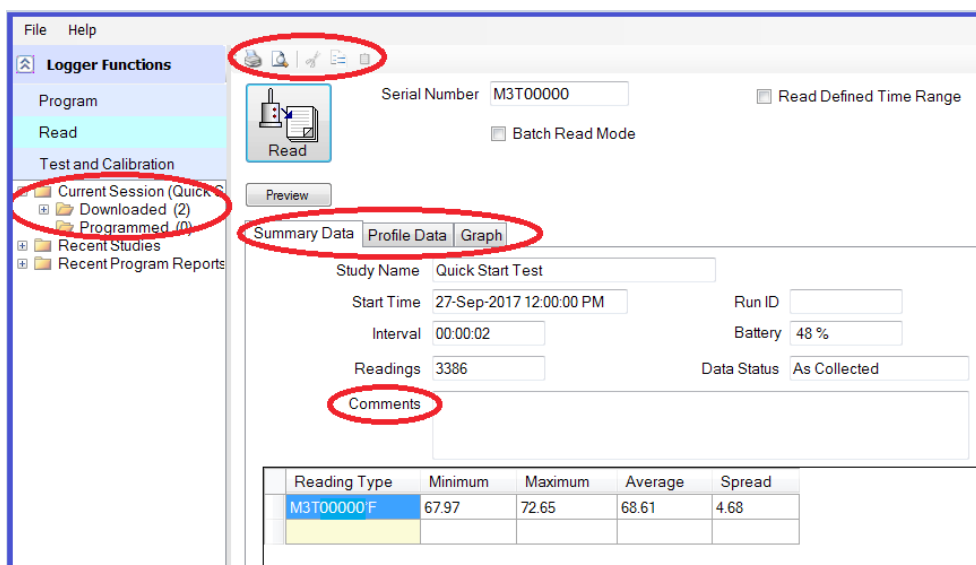
Batch Read Mode

- Place a logger in the interface.
- Click the Read button.
- When download is complete, remove the logger from the interface.
- Place next logger in the interface; it will be detected and downloaded automatically.
- When all loggers have been read, click Stop.
- Note: If different types of loggers are to be read, read one type first, then Stop the batch read process, change the logger type, and restart the Read process.



Read Views and Detail

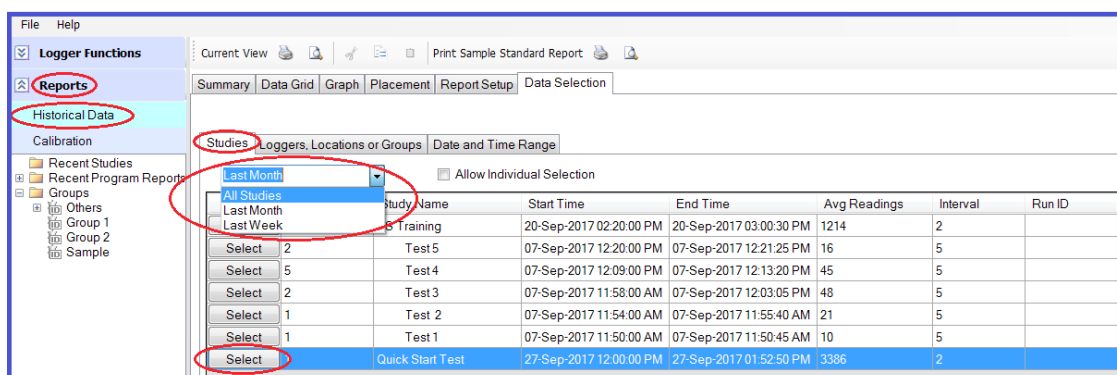
- Summary View: Shows programming details and data statistics.
- Profile Data: A grid showing time-stamped data values.
- Graph: Graphical display of the data with zooming and axis scale control. Right click on graph to expose menu.



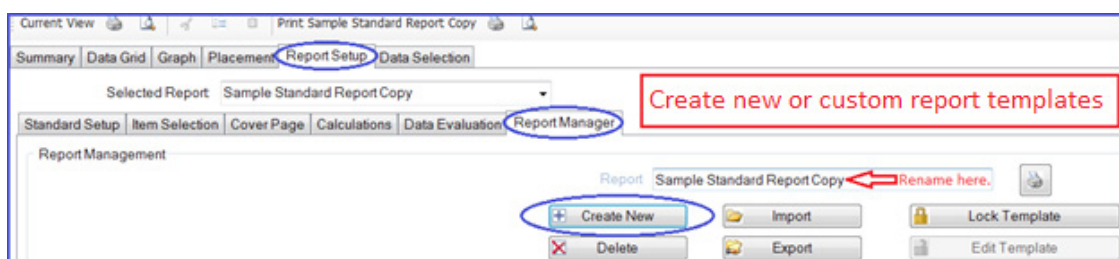
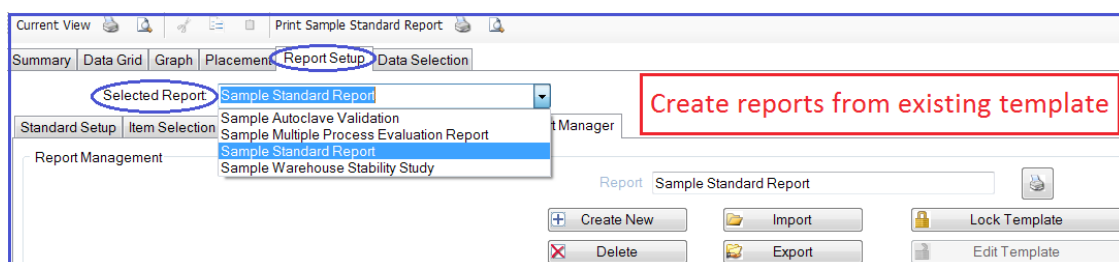
- Data from any of the views can be Viewed or Printed by using the top menu bar icons. Copy-and-paste is also available for exporting to another application.
- Calculations such as Lethality or MKT will appear in the summary view if so defined in the System Setup.
- The Current Session browser view will show which loggers have been read, and which have not.
- If a Comment was entered when the logger was programmed, it will be displayed in the summary view. The comment may be edited, or a new one added if desired. Comments can also be entered or edited in the summary view of a report.
- When all loggers have been read, a report for the entire batch or study can be instantly accessed by selecting Current Session or Recent Studies in the browser view. Right click to expand selection menu.

Creating Reports

- After the loggers have been Read, the collected data will be stored and viewed in the Reports bar under Historical Data.
- You may need to change the dropdown menu from "Last Month" to "All Studies."
- Select desired Study.
- After the desired Study has been selected, the data can be viewed or analyzed in four different ways: Summary, Data Grid, Graph, and Placement. Each may be individually printed.
- Data from any of the views can be Viewed or Printed by using the top menu bar icons.
- Copy-and-paste is also available for exporting to another application.



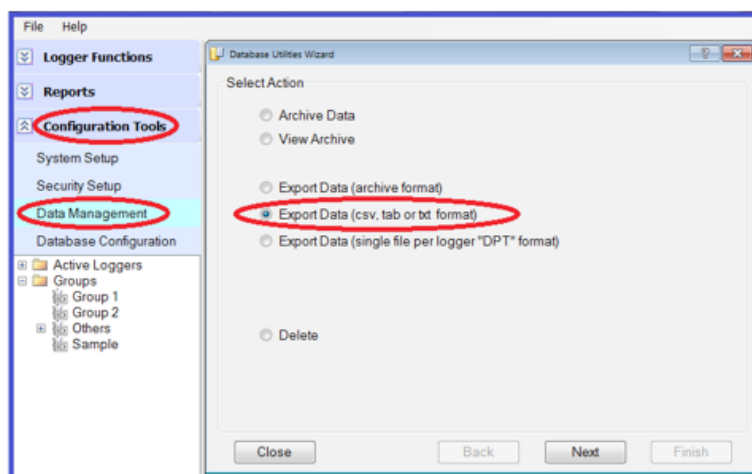
- To create a report in a pre-existing template:
 - Select Report Setup tab.
 - Change dropdown menu to "Sample Standard Report" OR desired template.
- To create a custom report, start with the Report Manager tab.
 - Create New and change the report name as desired.
 - Next, navigate the remaining subtabs of and implement desired changes.



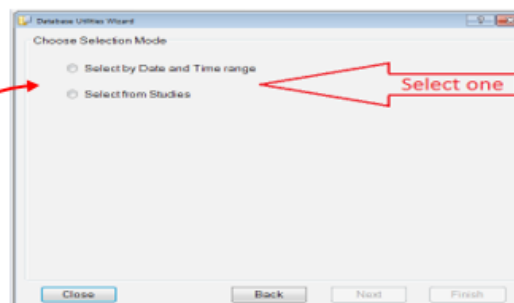
Exporting Data

DT Pro itself is a powerful reporting engine, but it is also possible to export data to other programs if desired. Below are instructions to export to Excel.

- Expand the Configuration Tools bar and select Data Management to open the Database Utilities Wizard.
- Select Export Data (tab, csv or txt format), and press Next.



Choose either:
Select by Date and Time range or
Select from Studies
as the source of the data to be
exported, and press **Next**.



[Subsequent screen views will vary based on last step's selection.]

- Choose the data to be exported.
 - If Select by Date and Time range was selected, enter the date and time range to be used, and press the Finish button.
 - If Select from Studies was selected, press the Finish button of the desired study.
- Choose the location to save the file.
 - Save the file as *.tab.
 - Update the file name as needed.
- Press the Close button to exit the export.