

Vaisala Veriteq Continuous Monitoring System

/ FAIL-SAFE MONITORING, ALARMING AND REPORTING



VAISALA

Vaisala Veriteq Continuous Monitoring System



"[The system] performed flawlessly — I really appreciate Vaisala expedient service and quality product."

**- Jason Corrao,
New Technology Project Manager**

With non-disruptive installation on existing networks, viewLinc saves time for IT and Quality personnel and significantly reduces total cost of ownership. Secure browser-based accessibility provides alarming and reporting that can be customized, automated, and delivered how and when required. 1-year long term accuracy is stated so you know that data will always be within specification — no surprises the next time you need to calibrate.

The viewLinc monitoring system helps you prevent product loss and meet regulatory requirements with accurate, fail-safe records for temperature, humidity and other critical conditions. By combining independent recorders powered by a 10-year battery with a secure database on your network, viewLinc ensures that no data can be lost to power outages or network interruptions. That's why the world's largest pharmaceutical, biotechnical and critical manufacturing organizations rely on viewLinc for 21 CFR Part 11 compliance, QC/QA audits, and meeting the standards of international regulatory bodies.

Fail-safe Performance

- **Complete Data Protection**
Independent recorder memory, 10-year battery and automatic data backfill ensure against lost data.
- **Flexible Alarming**
Remote and local alerts — text, phone, pager, PC, buzzer, light — send notice of out-of-tolerance conditions.
- **Easy, Automated Reporting**
Browser-based access lets you create custom reports on demand. Or, automate frequently run reports and schedule delivery by email.
- **Low Cost of Ownership**
Deploys on your existing network. No need to validate or maintain software on client PCs.

Monitoring, Alarming, Reporting

Controlled Environments, Critical Applications

Ideal for GxP/FDA-regulated applications and environments that contain high-value products and processes, viewLinc is flexible, fully validatable, and easy to deploy and use. Each plug-and-play data recorder provides the single most important feature in reliable instrumentation: data are recorded in real-time, at the point of measurement. Unlike similar monitoring systems, viewLinc backs up data with triple redundancy and then maintains it in a secure format for review and reporting.

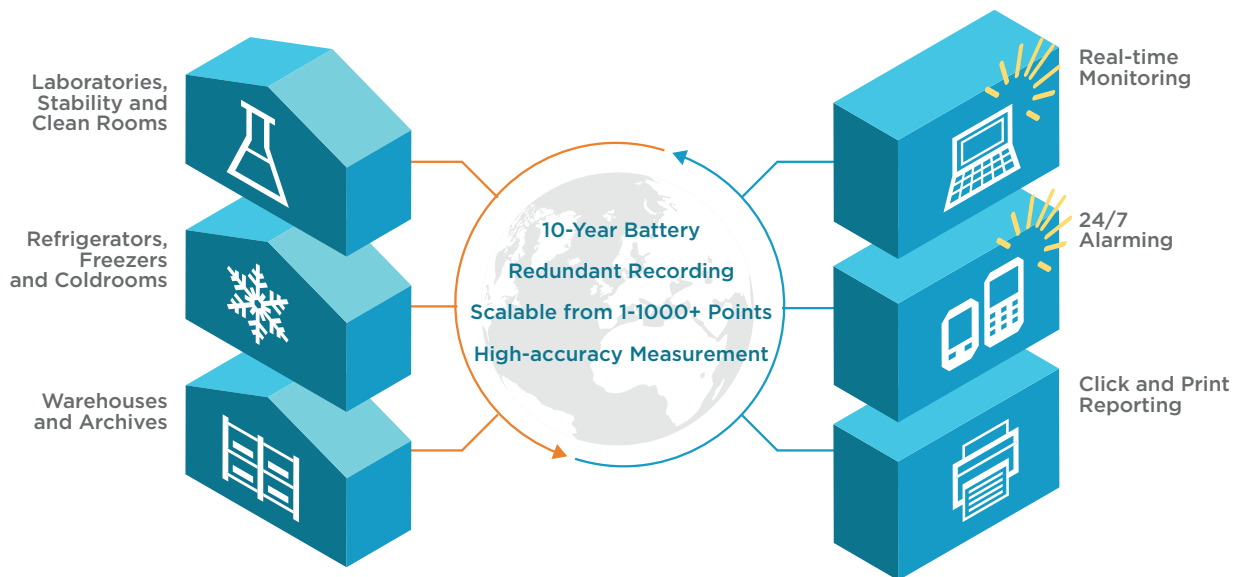
viewLinc is easily customized to fit your needs. A single recorder can monitor temperature, relative humidity, and the analog sensor of your choice; external channels can take either current or voltage inputs for recording differential pressure, CO₂, level, light, particles, conductivity, and more. Optional Boolean channels allow you to monitor door switches or alarm contacts. Simply select the recording device to match your application. Adding and moving the recorders is easy, with no database programming, outsourcing, or extra services required.

"After researching several companies, the decision to purchase viewLinc was easy. The software is Part 11 compliant and the protocol is outstanding!"

**- Jean Wilson
Senior Stability Scientist**

Multiple Applications

- Warehouses
- Clean rooms
- Stability areas
- Calibration labs
- Archival storage
- Medical research
- Blood/tissue banks
- Cold rooms & freezers
- Critical manufacturing



Monitoring: Easy, Real-time, Accessible

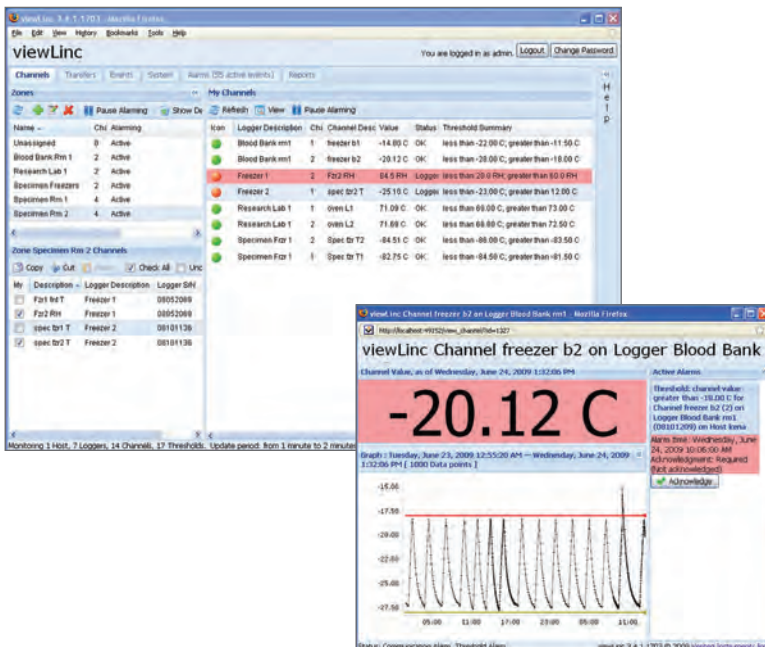
Scalable, Flexible

- Log into your network and view monitored environments from anywhere in the world. An unlimited number of users can monitor and report from any standard web browser.
- Monitored areas are organized into secure “Zones” that allow you to add locations on the same server and make them accessible only to authorized personnel.
- Start with a single monitored point and scale up as you need – from one data recorder to thousands distributed throughout a facility or across a wide geographic area.
- Add viewLinc's data recorders to any OPC-compatible monitoring system. Interoperability provides added flexibility to your existing monitoring infrastructure.
- viewLinc's audit trail documents all interactions with the system, providing a complete record for compliance with 21 CFR Part 11 and other regulatory and accreditation requirements.



“We are ecstatic with the viewLinc Monitoring System! It helps us meet FDA 21 CFR Part 11 and AATB accreditation requirements and we can monitor multiple sites from any location.”

**- Brad Bayette,
Tissue Services Manager**



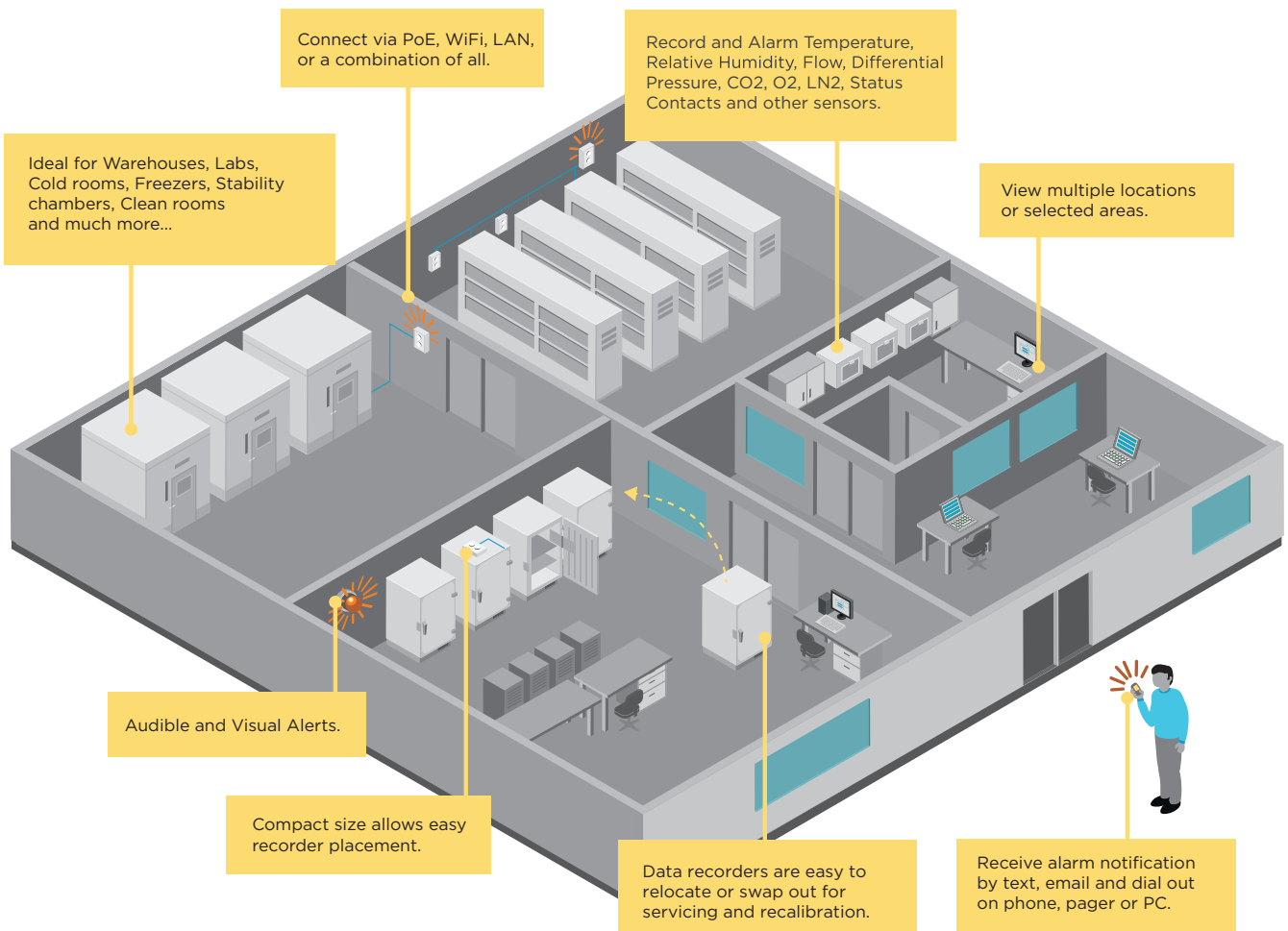
View summaries of all monitored areas, or drill down to the details of each sensor: real-time trends, alarms, acknowledgments, and more...

An Enterprise-wide Solution

The viewLinc system can be customized for your entire operation and installs easily on any standard network. Connectivity options include Power over Ethernet with the vNet PoE connectivity cradle, wireless via 802.11b Ethernet interface, standard or multiport ethernet, or direct to PC via USB. By connecting with your existing network, users can set up flexible

and expandable monitoring systems that display real-time data, automatically back-up and store data, and send alarms through a variety of notification methods. Unlike other continuous monitoring systems, viewLinc doesn't require expensive and disruptive hard-wiring and cabling. There is no dedicated network to maintain. In addition, data loggers can be easily relocated

to suit multiple applications and changing needs. Unique to viewLinc is the vNet connectivity device for Power over Ethernet. With its snap-in logger cradle, vNet streamlines connectivity by eliminating extra wiring and the cost of installing an AC power source. Systems that have Uninterruptible Power Supply (UPS) can monitor during a power failure, making your records truly fail-safe.



Reporting and Alarming

Compliant, Audit-ready, Customizable

viewLinc's flexible reporting capabilities keep your monitored environments compliant with FDA, AABB, AATB and other recognized international regulatory requirements. Users can create a wide variety of detailed and summary reports that include values, locations, duration, acknowledgements and corrective actions. Detailed naming of recorders and channels allows for complete descriptions of monitored locations, making it easy to find, monitor and report on select areas. Frequently generated reports — such as email and alarm history reports — can be pre-configured and automatically delivered by email on a schedule to relevant personnel. With viewLinc's reporting options, automation, and security, your

internal Quality or customer-required records are always available, gap-free, and audit-ready.

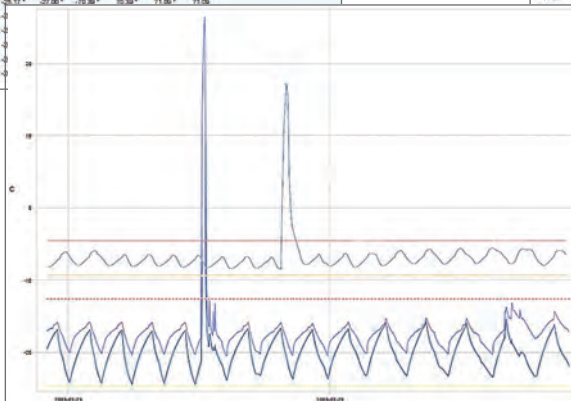
viewLinc's fail-safe alarming is easy to configure, customize, and automate. With escalating multi-threshold alarms, viewLinc triggers a notification at the first sign of a problem, sending alerts via cell phone, pager, desktop display, dial-out phone, or text email. Zone security permits scheduling of notification by day, time, and user. System administrators can set alarming functions according to shift schedules, escalation procedures, and user permission-level. The viewLinc system's security settings can be used alone or in conjunction with Windows authentication to allow easy management of permissions.



Flexible Reporting

- Review specific monitored points over selected time periods.
- Quick summary and detailed alarm history: values, locations, duration, acknowledgements and corrective actions.
- User-defined limit lines give a quick visual reference on graphic reports.
- Reports are formatted and presentation-ready, including data, statistics, and graphs.

Channel	Channel	Channel	Channel	Channel	Channel	Value	Value	Value
Port No	Port No	Port No	Port No	Port No	Port No			
2009-07-20 08:11:43	-4.84	-0.78	-70.51	70.51	70.60	70.80		
2009-07-20 08:12:44	-4.84	-0.80	-70.22	70.22	70.60	70.80		
2009-07-20 08:13:43	-4.84	-0.71	-69.71	69.71	70.22	70.22		
2009-07-20 08:14:43	-4.90	-0.78	-69.10	69.10	69.54	69.54		
2009-07-20 08:15:43	-4.90	-0.79	-71.21	71.21	71.91	71.91		
2009-07-20 08:16:43	-4.07	-0.78	-71.10	71.10	71.09	71.09		
2009-07-20 08:17:43	-4.07	-0.78	-70.82	70.82	71.09	71.09		
2009-07-20 08:18:43	-4.07	-0.78	-70.05	70.05	70.82	70.82		
2009-07-20 08:19:43	-25.04	-0.78	-68.69	68.69	69.93	69.93		
2009-07-20 08:20:43	-25.04	-0.88	-70.21	70.21	71.92	71.92		
2009-07-20 08:20:47	-25.02	-0.77	-71.00	71.00	71.45	71.45		
2009-07-20 08:21:43	-25.04	-0.93	-70.80	70.80	71.45	71.45		
2009-07-20 08:22:43	-25.04	-0.95	-70.28	70.28	70.89	70.89		
2009-07-20 08:22:44	-25.04	-0.93	-70.98	70.98	70.93	70.93		
2009-07-20 08:23:43	-25.04	-0.93	-69.71	69.71	70.10	70.10		
2009-07-20 08:24:43	-25.10	-0.93	-70.31	70.31	70.74	70.74		
2009-07-20 08:25:43	-25.10	-0.93	-69.83	69.83	70.45	70.45		
2009-07-20 08:26:43	-25.10	-0.93	-68.37	68.37	69.88	69.88		
2009-07-20 08:27:43	-25.10	-0.70	-70.82	70.82	71.03	71.03		
2009-07-20 08:28:43	-25.10	-0.93	-70.82	70.82	71.67	71.67		
2009-07-20 08:29:43	-25.17	-0.86	-70.36	70.36	71.86	71.86		
2009-07-20 08:30:43								
2009-07-20 08:31:43								
2009-07-20 08:32:43								
2009-07-20 08:33:43								
2009-07-20 08:34:43								



viewLinc Alarm Report

Alarm events: From 2009-06-10 21:14:58 to 2009-06-13 21:14:58
 Report generated on: 2009-06-13 21:15:13
 Included zones and channels: All Channels
 Include alarm details: Yes

Summary	Value
Activated alarms:	11
Deactivated alarms:	14
Acknowledged alarms:	16

AlarmTime	DeactivationTime	Duration	Alarm	Description	Acknowledgement
2009-06-10 17:58:19	2009-06-11 02:14:58	11 days, 13 hours, 16 minutes, 16 seconds	Threshold channel value greater than 20.0 C for Channel 7 and log RM (2) on Logger 1 (0802088) on Host Samu	Threshold: Custom Alarm for Threshold channel value greater than 20.0 C for Channel 7 and log RM (2) on Logger 1 (0802088) on Host Samu	Alarm open
2009-06-11 02:14:58	2009-06-11 02:14:58	0 seconds	Alarm condition no longer met: Deactivating alarm.		Alarm closed
2009-06-11 18:58:22	2009-06-11 18:58:22	0 seconds	Logger 1 (0802088) on Host Samu	Custom Alarm: Default Communication Alarm for Logger 1 (0802088) on Host Samu	Alarm open
2009-06-11 02:17:23	2009-06-11 02:17:23	0 seconds	Logger Forge 1 upper (08102055) on Host Samu	Logger Configuration Alarm: Default Forge 1 upper (08102055) on Host Samu	Alarm open
2009-06-11 02:21:31	2009-06-11 02:21:31	0 seconds	Threshold channel value greater than 23.00 C for Channel 7 and log RM (2) on Logger 1 (0802088) on Host Samu	Threshold: Custom Alarm for Threshold channel value greater than 23.00 C for Channel 7 and log RM (2) on Logger 1 (0802088) on Host Samu	Alarm open
2009-06-11 02:21:31	2009-06-11 02:21:31	0 seconds	Alarm condition no longer met: Deactivating alarm.		Alarm closed

Comprehensive Support

Installation, Maintenance, Warranties

We offer full support for the life of our products. You can depend on responsive service from our technical support team. We ensure that your system maintains its high standards for your compliance requirements.

Service Packages: Training, Installation, Validation

As a standard part of every viewLinc system, we provide a 2 year warranty, support by phone, fax, Web or e-mail, and initial Web-based training for users and administrators. We offer optional support packages that can include any or all of the following:

- Full system install
- Full system validation
- Notification of new Standard Service Pack Releases
- Software updates and validated factory IQ/OQ change control documents
- Hardware extended warranties
- Onsite service support within 72 hours, if remote support does not resolve issue(s)

Customizable Support

- Multi-level Service Packages—from basic to complete 24/7 support
- Onsite or remote support—worldwide
- User/Admin Training—onsite or remote
- Extended Warranties & pre-paid Calibration Plans

Calibration: On-site or Accredited

To maintain the high accuracy measurement of the viewLinc system, we perform calibrations and complete functional testing in our own A2LA accredited lab, which meets the standards of ISO/IEC 17025 & ANSI/NCSL Z540-1-1994.

Calibrations include:

- Verification of specifications against the original calibration
- Battery check with any necessary firmware updates
- Measurement accuracy specified for one year—a specification that is unique to Vaisala's VL and SP data recorders.

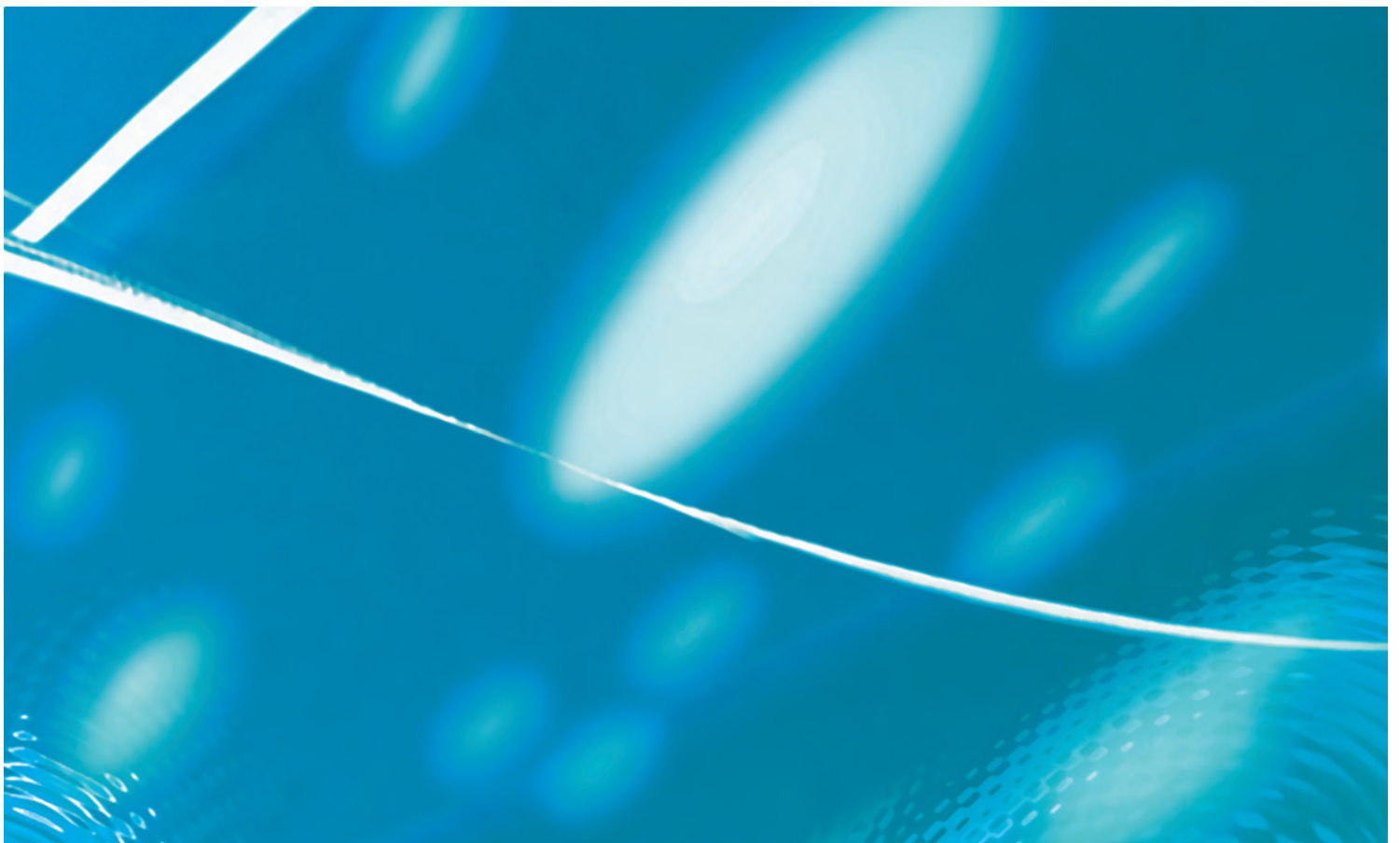
Wherever sending recorders in for recalibration is impractical, we offer onsite calibration for some devices. On-site calibration includes NIST-traceable certificate and reminders of recalibration due dates.



"The Vaisala IQ/OQ protocol is very nicely done... [it's] very complete and saved us 2-3 weeks of work."

**- Stephan Montag,
Head of IT**

To reduce the costs of calibration, we offer optional 3- or 5-year pre-paid plans that not only provide protection from price increases, they are a significant savings on calibration costs. For your convenience, we provide loaner data recorders while units are being recalibrated.



VAISALA

CiK
SOLUTIONS
www.cik-solutions.com

For more information, visit
www.cik-solutions.com
or contact us at
info@cik-solutions.com

Ref. B211046EN-B ©Vaisala 2011
This material is subject to copyright protection, with all copyrights retained by Vaisala and its individual partners. All rights reserved. Any logos and/or product names are trademarks of Vaisala or its individual partners. The reproduction, transfer, distribution or storage of information contained in this brochure in any form without the prior written consent of Vaisala is strictly prohibited. All specifications — technical included — are subject to change without notice.