



中国认可
 检验
 INSPECTION
 CNAS IB0011

货物运输条件鉴定报告书

Report for Safe Transport of Goods

Page 1 of 6 Pages

No.: UN2021-4943-2

 海运 By Sea	锂电池—非限制性货物 (SP 188) Lithium batteries—Non-restrictive goods (SP 188) 报告有效期 Period of validity: 2022-12-31
---	---

样品名称

锂-二氧化锰电池

CR2032 3,0V 225mAh

Sample Name.....

Li-/MnO2 Battery

CR2032 3,0V 225mAh

委托单位

惠州亿纬锂能股份有限公司

Commissioner

EVE Energy Co., Ltd.

威凯检测技术有限公司

CVC Testing Technology Co., Ltd.

货物运输条件鉴定报告书

Report for Safe Transport of Goods

Ref. No.: UN2021-4943-2

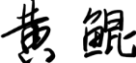
Page 2 of 6 Pages


样品信息/ Sample information	
样品名称	锂-二氧化锰电池
Sample name.....	Li-/MnO2 Battery
电池类别/Battery Category	锂金属电池/Lithium metal batteries
电池型号规格/Battery Type.....	CR2032 3,0V 225mAh
锂含量/Lithium content	0,06g
外观颜色/ Appearance.....	银色/ Silver
委托单位/ Commissioner information	
委托单位	惠州亿纬锂能股份有限公司
Commissioned by	EVE Energy Co., Ltd.
制造商/Manufacturer information	
制造商	惠州亿纬锂能股份有限公司
Manufacturer	EVE Energy Co., Ltd.
包装件信息/Package information	
包装件重量/Package quantity. :	15,04kg
电池净重/ Battery net weight .. :	12,24kg
电池个数/ Battery Number	4000pcs
包装件尺寸/Package size	350mm*280mm*250mm
时间信息/ Date	
鉴定日期/ Inspection date.....:	2021-11-25~2021-12-02
报告有效期 Period of validity ...:	2022-12-31
鉴定依据/Inspection refer to	
《国际海运危险货物规则》 IMDG CODE (Amdt.40-20) 2020 Edition	
鉴定结论/ Certification	
1. 运输名称/Proper Shipping name: — 锂金属电池（包括锂合金电池）/ Lithium metal batteries (Including lithium alloy batteries)	
2. 危险性识别/ Hazards identification : — 锂金属电池/Lithium metal batteries	
3. 该物品符合 IMDG CODE (Amdt. 40-20) 2020 版特殊规定 188 的要求，不受规则的其他条款限制。 / The article complies with the special provision 188 of IMDG CODE (Amdt. 40-20) 2020 Edition, and not subject to other provisions of the code. — 包装件毛重不超过 30kg。 / The gross weight of the package does not exceed 30kg.	
签发日期: Issue Date: 2021-12-09	鉴定单位盖章 (Seal of CVC)


批准人: 黄鲲

审核人: 张思瑶

鉴定人: 姜维维

Approved by: 

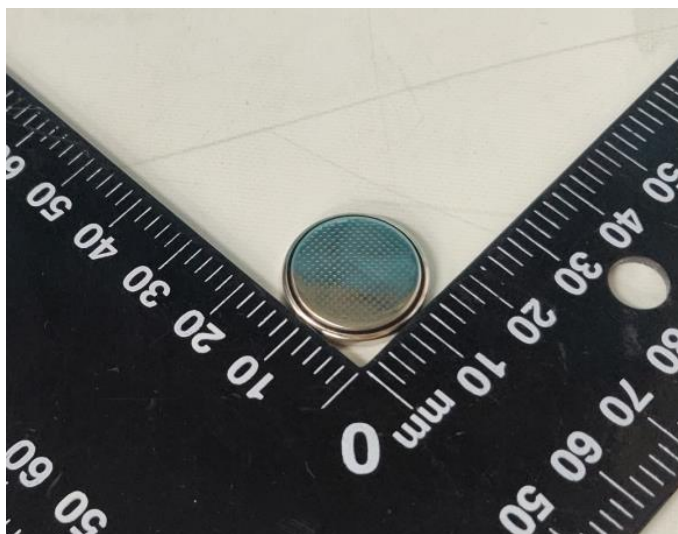
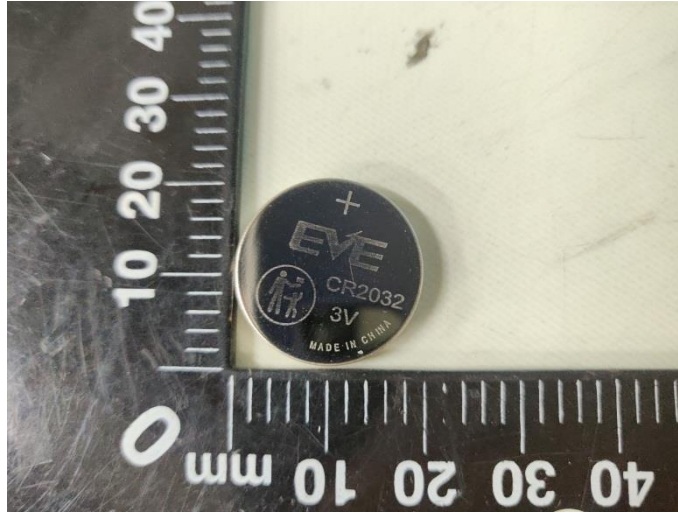
Reviewed by: 

Appraisal by: 

检查结果及其他事项 Inspection results and other information	
1	<p>本报告所述锂电池已经通过联合国《试验和标准手册》第三部分第 38.3 节的相关测试要求。UN38.3 测试报告编号及试验概要的编号为 RZUN2018-1880-M1 / RZUN2018-1880-M1-TS</p> <p>The Lithium cells/batteries listed in the report are of type proven to meet the requirements of each test in the UN Manual of Tests and Criteria Part III subsection 38.3. The UN38.3 test report and test summary numbers are : RZUN2018-1880-M1 / RZUN2018-1880-M1-TS</p> <p>本报告所述锂电池的包装箱能够承受 1,2 米跌落测试 1,2 米跌落测试报告编号：RZUN2018-1880-M1-DT1</p> <p>The package of Lithium batteries listed in the report is capable of withstood the 1,2m drop test. The 1,2m Drop Test report No. is RZUN2018-1880-M1-DT1.</p>
2	<p>本报告所述锂电池按照《国际海运危险货物规则》(40-20 版) 2.9.4 (5) 规定的质量管理体系进行制造。</p> <p>Lithium cells and batteries listed in this report were manufactured under the quality management program as described in IMDG CODE (Amdt. 40-20) 2020 Edition 2.9.4 (5).</p>
3	<p>锂电池具有适当的防短路措施。</p> <p>Cells and batteries are properly protected so as to prevent short circuits.</p>
4	<p>锂电池装在能完全封闭其的内包装再放置在坚固外包装。</p> <p>Cells and batteries are packed in inner packagings that completely enclose the cell or battery then place in a strong outer package.</p>
<p>备注: Remarks: 该报告中逗号用以代替小数点。 Throughout this report a comma is used as the decimal separator.</p>	

样品照片
Photos of Samples

电芯/Cell (CR2032 3,0V 225mAh)



包装照片
Photos of Packages

包装箱/ Package



注 意 事 项

Important Notice

1. 本鉴定报告书仅对送检样品有效。
This report is valid for the tested samples only.
2. 申请人提供的样品须与实际运输货物一致。
The goods applied for shipment must be in conformity with the tested samples.
3. 本鉴定报告书无鉴定单位印章无效。
This report is invalid without the official stamp of CVC.
4. 本鉴定报告书无批准人、审核人及鉴定人签名无效。
This report is invalid without the signatures of Ratifier, Reviewer and Appraiser.
5. 本鉴定报告书涂改无效。
This report is invalid if altered.
6. 本鉴定报告仅纸质版或电子版原件有效, 任何形式未经许可的报告复制件均无效, 包括但不限于复印件、传真件及扫描件等。
The original softcopy or hardcopy of this report is the only valid version. Any form of unauthorized copies of the report are invalid, including but not limited to, copy, fax and scan etc..
7. 本鉴定报告书可以通过扫描封面二维码或登录网站 <http://www.cvc.org.cn> 上核实。
This appraisal report can be verified by scanning the QR code on the cover or visiting the website <http://www.cvc.org.cn>.

地 址: 中国 广州市科学城开泰大道天泰一路 3 号
Address: No.3,Tiantaiyi Road, Kaitai Avenue, Science City, Guangzhou, P. R. China.

电 话(Tel): (020)32293888

传 真(FAX): (020)32293889

邮政编码(Post Code): 510663

E-mail: office@cvc.org.cn

<http://www.cvc.org.cn>