

For simple, highly accurate and reliable quality control, nobody monitors your products like DataTrace.

Monitoring the inside of a can is a crucial step for manufacturers to ensure the safety of their products for general consumption. As many manufacturers have developed several packaging configurations, Mesa offers several accessories to place the DataTrace data logger probe in the geometric center of the unit, regardless of the can size.

DataTrace Can Monitoring - Internal



Metal Internal Retainers #124818-500 (package of 6)

All stainless steel parts, eliminates sanitation concerns, fixed height, works with your existing inventory, can be applied from the top of the unit.



Adhesive Disk #124615-501

Most inexpensive solution, works with any MPIII probe length, ideal for general use.



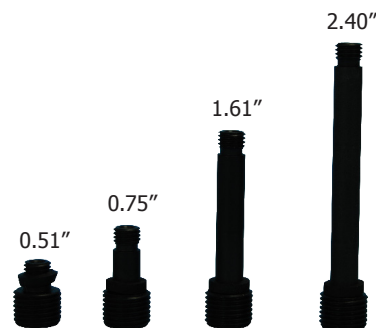
Plastic Internal Retainers #124853500 (package of 6)

Plastic Standoff, suitable for increased temperatures, more secure placement.



Plastic Internal Retainer with Standoff #210278-005 & 001

Allows the user to position the probe tip into the geometric center of multiple can sizes using only the 1 inch probe tip and appropriate standoff.

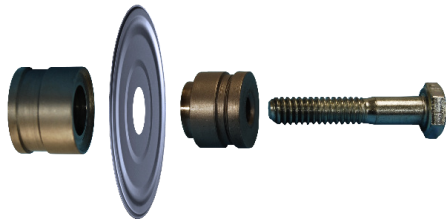


Measurements to bases of assembled standoffs

DataTrace Can Monitoring - Internal

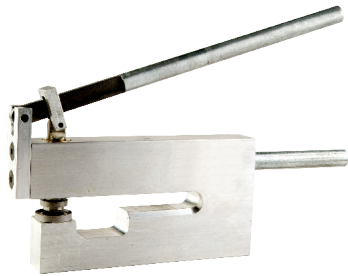
Tools and Accessories

In order to utilize many of our accessories, some of the following tools may be required for logger and assembly installation.



C-11 Can Punch #210279-001

Punch is used to create the ideal sized hole in can lid to install plastic internal retainers.

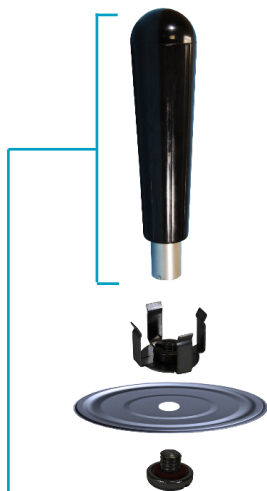


Part #210279-003

This tool is specifically designed to create an ideally sized hole in the side wall of a can to aid in logger placement.

Thermowell

The Thermowell is a data logging system which allows for addition/removal of the logger without breaking the seal of a can or bottle. See our website for more information.



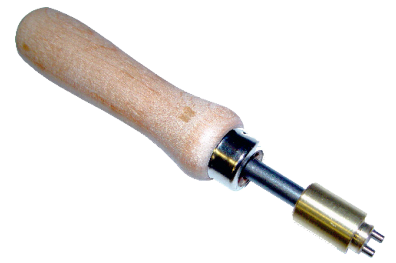
Part #124960-500

This tool allows the user to secure the holder in place while installing the internal retainer (124818-500). Ideal for use with part numbers 124961-500 & 210601-500.



Awl #210279-002

Awl used for creating an initial hole in can body, for use with Metal Internal Retainer.



Spanner Wrench #200279-002

Used to secure standoffs within can/receptacle.