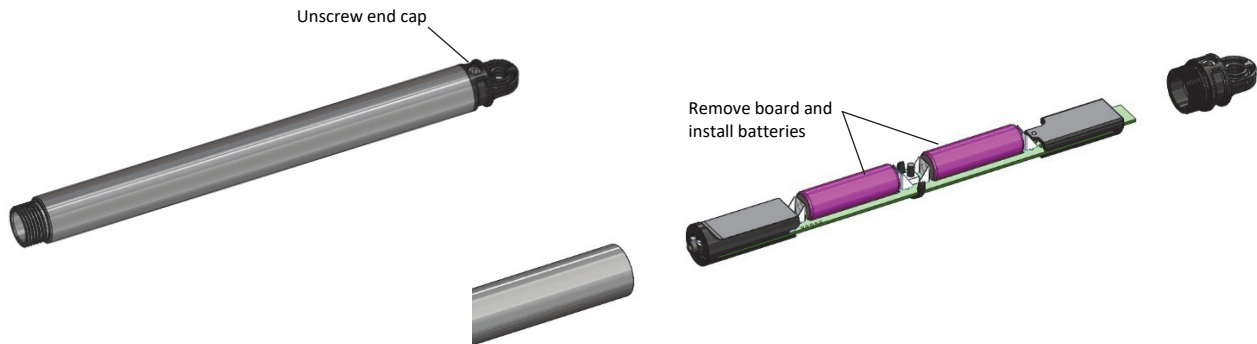


# Quick Start for the HOBOb® MX Water Level Logger (MX2001)

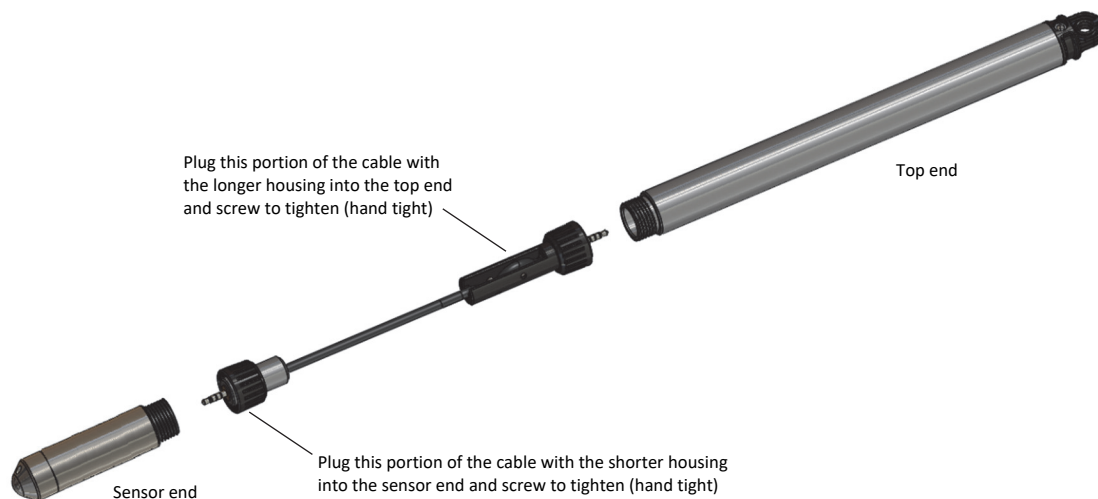
**Before you begin:** After completing steps 1–4, it is recommended that you perform a trial run of steps 5 through 11 before deploying the logger.


**IMPORTANT:** When assembling the logger or attaching the cable, make sure the O-rings and mating housing surfaces are clear of any debris. Any contamination of these surfaces can cause leaks that will lead to logger failure.

- 1 Install the batteries in the top end. Unscrew the end cap and pull out the board. Apply a small amount of the included fresh dielectric grease to the battery terminals. Insert the included two AA batteries observing polarity as shown on the board. Reinsert the board. Screw the cap back on until hand tight.



- 2 Connect the top end to the sensor end with the water level logger cable as shown here. The end of the cable with the longer housing connects to the top end as shown below.






- 3
  - Download HOBObconnect® to a phone or tablet from the App Store® or Google Play™.
  - Download HOBObconnect to a Windows® computer from [www.onsetcomp.com/products/software/hoboconnect](http://www.onsetcomp.com/products/software/hoboconnect).
- 4 Open the app. Enable Bluetooth® in your device settings if prompted.
- 5 Tap Devices in the app. The logger should appear in the list of devices. If it does not appear, make sure it is within range of your phone, tablet, or computer. (Note that the serial number shown in the app is for the top end of the logger).
- 6 If you are ready to deploy the logger, place it in the deployment location. Refer to the logger manual at [www.onsetcomp.com/manual/mx2001](http://www.onsetcomp.com/manual/mx2001) for deployment guidelines. Otherwise, skip deployment and complete the following steps as a test.
- 7 Tap the logger in the app to connect to it and tap  to set up the logger.

- 
- 8** Under Deployment Information:
- Tap Reference Water Level and enter the current water level as the reference level in meters or feet. Water levels that are below the reference point should be entered as negative values. The reference water level entered will be associated with the first data point once logging begins to determine the correction factor to be used for water level data.
  - Tap Water Density and select one from the list for the deployment or enter your own value under Manual Input.
  - Tap Save to return to the Configuration screen.
- 

- 9** Scroll down in the Configuration screen to select the measurement parameters to be logged. Differential pressure must be enabled to calculate water level. Temperature must be enabled to log absolute pressure. Temperature is also required if you selected the water density option “Fresh Water adjusted for Temp.”
- 

- 10** Select any other logger settings as desired and then tap  to save the settings to the logger. The logger will begin logging data based on the settings you selected.
- 

- 11** To offload data from the logger to your device, tap Devices. Connect to the logger and tap . To view or export the data, tap HOBO Files, tap  (if applicable), and tap .
- 



For detailed specifications and information about this logger, refer to the complete product manual. Go to [www.onsetcomp.com/manual/mx2001](http://www.onsetcomp.com/manual/mx2001) or scan the code at left.