



Cover Your Research Sites with Reliable Data Collection

The HOBONet Field Monitoring System helps researchers monitor microclimates over a wide area with rapid, accurate access to insights and flexible exporting for easy integration with other data. Monitor large and complex research sites with reliable 900 MHz wireless mesh networking and self-healing technology.

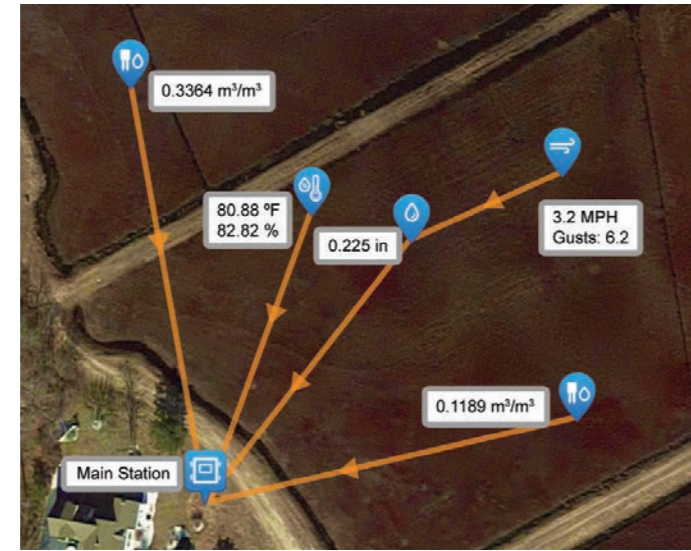
With affordable wireless sensors communicating through a single gateway, the HOBONet system provides the lowest-cost solution for getting multiple points of data to the internet, so you can easily view your data using map views and custom dashboards to better visualize and understand site conditions.



Protect Your Crops and Reduce Cost

The HOBONet Field Monitoring System helps growers reduce water use, save costs, improve crop quality, and protect against climate hazards such as frost and heat. For example, soil moisture sensors or evapotranspiration values inform you to irrigate just when needed, saving water and energy costs.

Temperature sensors can be used to send frost warning notifications, or to turn on frost-protection systems, and you can track conditions such as temperature, humidity, and leaf wetness to determine the risk of disease or pest emergence for intelligent spraying.



Powerful Visualization in Real-Time

More powerful than ever, Onset's cloud-based HOBOLink software makes it easy to view your data and manage your HOBONet Field Monitoring System remotely. With new dashboards and Google Map integration, your field monitoring data is more accessible and more meaningful.



Monitor Greenhouse Conditions with Real-Time Notifications

The HOBONet Field Monitoring System provides data for crop and irrigation management, and helps growers protect plants with real-time notifications if conditions reach user-set thresholds.

Now, you can monitor all your greenhouses from your desktop or mobile device with Google Map and dashboard views, and receive immediate notifications of system failures or critical conditions so you can respond faster. Monitor conditions to control disease, optimize irrigation, and time the maturity of your greenhouse.

Available Measurements

Both wireless and plug-and-play sensors monitor a wide range of environmental conditions and provide highly accurate and reliable measurements over extended periods of time.



Soil Moisture



Temperature



Temp/Humidity



Rainfall



Solar Radiation



PAR



Wind Speed & Direction



Calculated Evapotranspiration



Cost-Effective Wireless Monitoring of Field Conditions

The NEW HOBOnet Field Monitoring System from Onset provides a cost-effective and scalable solution for web-enabled monitoring of field conditions for applications such as crop management, research, and greenhouse operations.

Onset's wireless sensors are ready to deploy and easily link to the network, and data is accessed through the new version of HOBOLink®, Onset's innovative cloud-based software platform.

Key Advantages

- Lowest cost-per-measurement point
- Wide coverage with wireless mesh technology that can communicate through vegetation
- Scalable, with up to 50 wireless sensors streaming back to a central, cloud-based weather station
- Remote access to data and current conditions with a customizable dashboard for analysis
- Alarm notifications when conditions reach user-set thresholds



HOBOnet RX3000 Remote Monitoring Station

- Flexible support for a broad range of sensors
- LCD display for easy field deployment
- Cloud-based data access through HOBOLink
- Plug-and-play operation
- Alarm notifications via text, email
- Rugged double-weatherproof enclosure
- Cellular, Wifi, and Ethernet options available
- Configure & check on your RX3000 monitoring station from your mobile devices

HOBOnet RX3000 Wireless Sensors

- 900 MHz wireless mesh self-healing technology
- 450 to 600 meter (1,500 to 2,000 feet) wireless range and up to five hops
- Up to 50 wireless sensors per RX3000
- Simply push button to join the HOBOnet wireless network
- Onboard memory to ensure no data loss
- Powered by rechargeable AA batteries and built-in solar panel

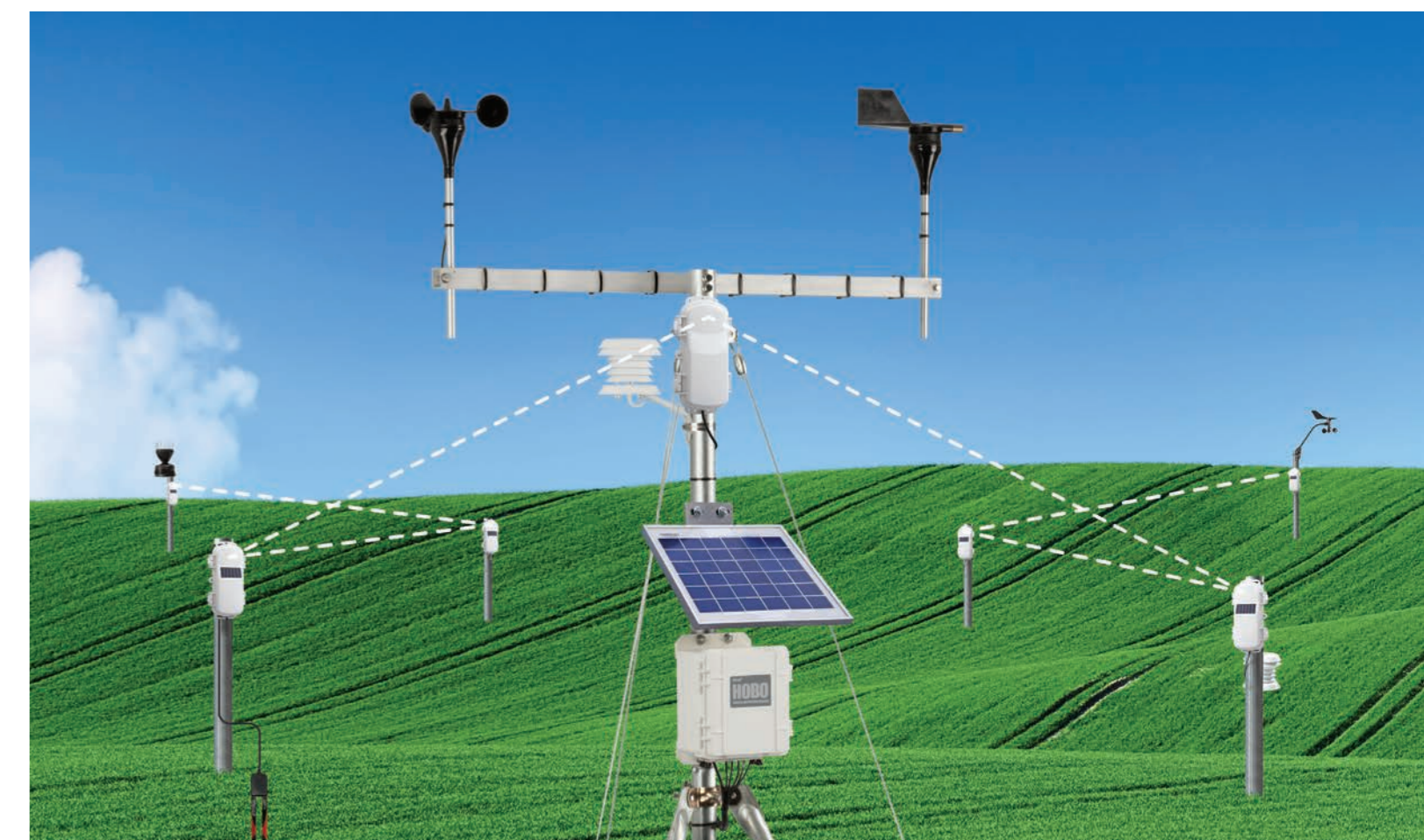


Onset is a leading supplier of data logger and monitoring solutions used to measure, record and manage data for improving the environment and preserving the quality of temperature-sensitive products. Based on Cape Cod, Massachusetts, Onset has been designing and manufacturing its products on site since the company's founding in 1981.



For more information, visit www.cik-solutions.com or contact us at info@cik-solutions.com

ONSET®



HOBOnet™ Field Monitoring System