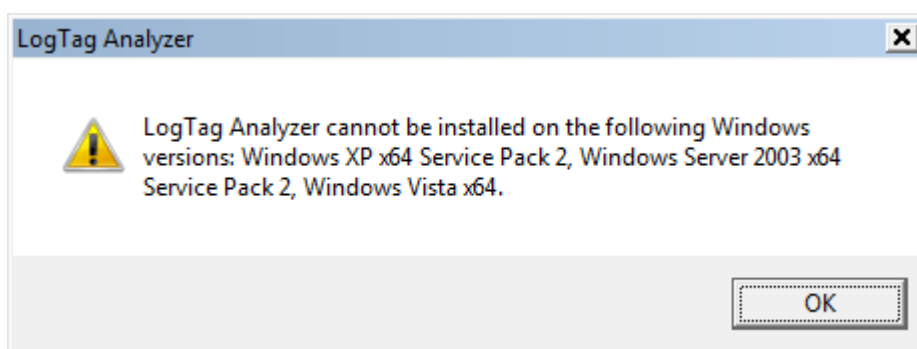


AN10 - Installing LogTag Analyzer on Legacy Operating Systems

To install LogTag® Analyzer on older operating systems, such as Windows XP and Windows Vista, you can no longer use the *.exe installer file. If you attempt such an installation, you will see an error message similar to this:



Instead, you must use the *.msi installer and then either rely on the operating system to download the correct USB interface driver from Windows Update, or run the separate USB driver installer for these operating systems.

1. Download the program installer *.msi file **ltanalyzer_28r2.msi** (Network Version) from the LogTag® Recorders website at <http://www.logtagrecorders.com/software/download.php>.
2. From the same page in the **Network Administrator links - Drivers for older operating systems** section, download the 2.8.24 version of the **32-bit USB driver *.msi file** for a 32-bit OS, or the **64-bit USB driver *.msi file** for a 64-bit OS.
3. Start the program installer by double-clicking the downloaded **ltanalyzer_28r2.msi** file. Please note if you install the software for the first time, it will initially display English text; for any other language please click **Edit - Options** and change the language in the **General Options** tab.
*When using the *.msi file for installation, you explicitly agree to the LogTag® Recorders' license agreement, which can be found in the LogTag® Analyzer User Guide.*
4. Start the USB driver installer by double-clicking the downloaded **USBxx_2.8.24.msi** file. This will install the USB drivers required for the LogTag® USB interface.

If your OS is Windows XP or Vista and you already use an older version of LogTag® Analyzer, you only need to run the program installer, as the correct USB drivers will have been correctly installed by the previous version.

Please note that some operations that rely on certain operating system functions may no longer work correctly. LogTag® Recorders no longer validate the software for use on these operating systems, and recommend the use of at least Windows 7. If you need to install on a legacy operating system, we strongly recommend you do your own validation testing before deployment.